

## An innovative scope with advanced features

### March-FX 4.5x-28x52mm



This scope was developed with practical precision shooting competitors in mind, but ease of use and compact configuration make it equally at home on nearly any shooting platform.

### Super ED Lenes & Anti-Temp. Drift

By incorporating Super ED lenses, we are able to reduce the chromatic aberration. Anti-Temperature Drift also assembled in this highest quality lens system naturally adapts to changes in temperature to maintain focus.



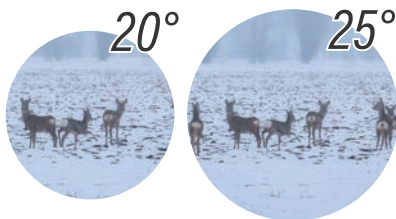
### Shot & Light body



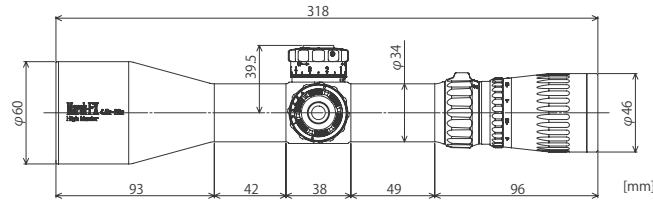
When comparing top-tier riflescopes with high-end optical systems equivalent to the High Master lens system, the short length (318mm; 12.5") and light weight (845g; 29.8oz) of the March-FX 4.5x-28x52mm are exceptional.

### Wide Angle Ocular

25 Degree Wide Angle Eyepiece will enhance apparent field of view throughout the 6.2 magnification range from 4.5-28x.



## Specifications



Model Number	D28HV52WFIML [D28HV52WFML]*
Magnification	4.5x-28x
Objective Lens Diameter	52mm
Exit Pupil	1.9mm(28x)
Eye Relief	70mm-90.3mm
Real Field of View (100m)	9.7m(4.5x)-1.56m(28x)
Focus	10yd - ∞
1 Click Adjustment	0.1MIL
1 Turn Travel	10MIL
Elevation / Windage Travel Amount	±15MIL / ±10MIL
Focal Plane	1st
Reticle	FML-3, FML-TR1 [FML-PDK, FML-LDK]*
Illumination	Yes (6 level) [No]*
Length	318mm (12.5inch)
Body Tube Diameter	34mm
Weight	845g (29.8oz) [815g (28.7oz)]*
	Sunshade / Flip caps (Obj. lens, Eyepiece) / MD disk Middle focus wheel / Large dial Fast lever / Battery (CR2032)**
Included Items	Lens cloth / Hex key
Warranty	10 years

\* Brackets[ ] indicate non-Illuminated model.

\*\* Illuminated model only

NEW for 2021

# March-FX

4.5x-28x52mm



**DEON**

**Deon Optical Design Corporation**

4802-2 Miyagawa, Chino-shi, Nagano-ken,  
391-0013 Japan

TEL : +81-266-75-5658

URL : <https://marchscopes.com>

E-mail : [info@deon.co.jp](mailto:info@deon.co.jp)

**DEON**

Deon Optical Design Corporation

# Illuminated Model

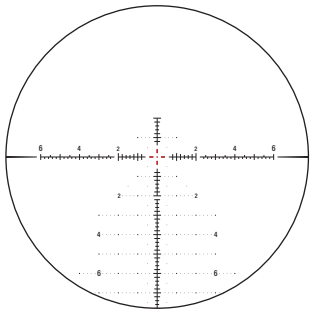
D28HV52WFIML



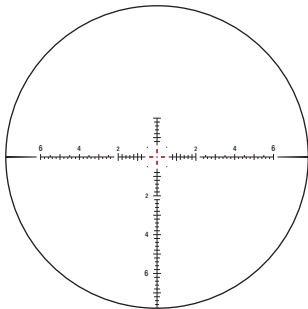
## Illuminated Reticles

Center dot and cross are illuminated with .2 mrad and .5 mrad hash marks throughout. The four dots around the center provide small visual references for quick shot corrections. The subtension for FML-3 is the same as FML-TR1 but without the tree part.

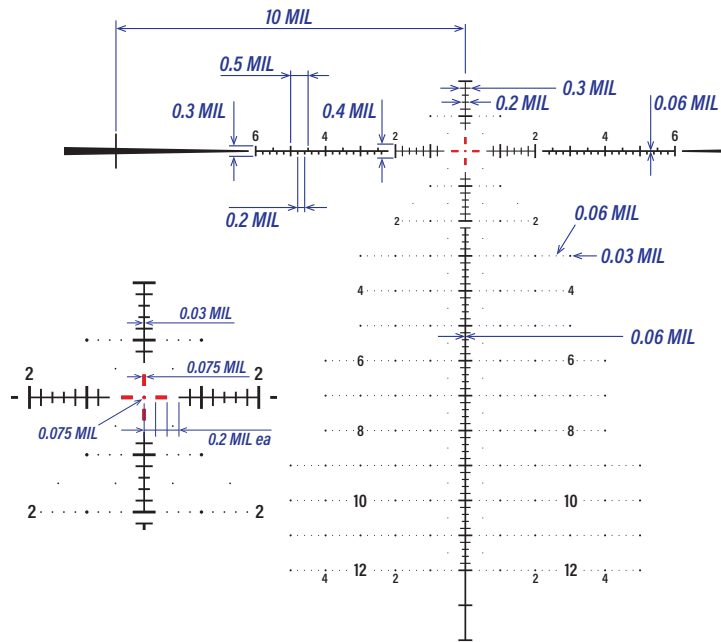
6 level illumination module is a standard specification for this model.



FML-TR1

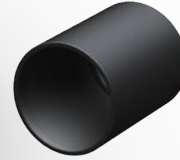


FML-3



## Included Items

Sunshade



Flip caps



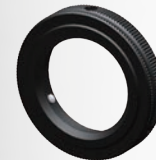
MD disk



Large dial



Middle focus wheel



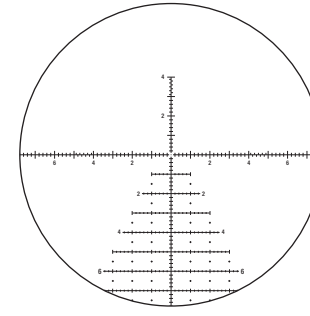
Fast lever



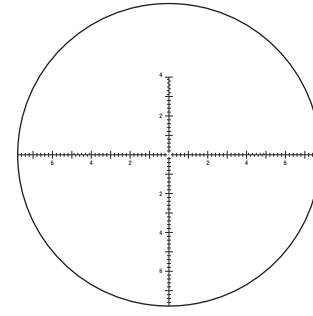
## Non-Illuminated Reticles

FML-PDK is a tree reticle, and FML-LDK reticle is a non-tree reticle for those who prefer a simpler design.

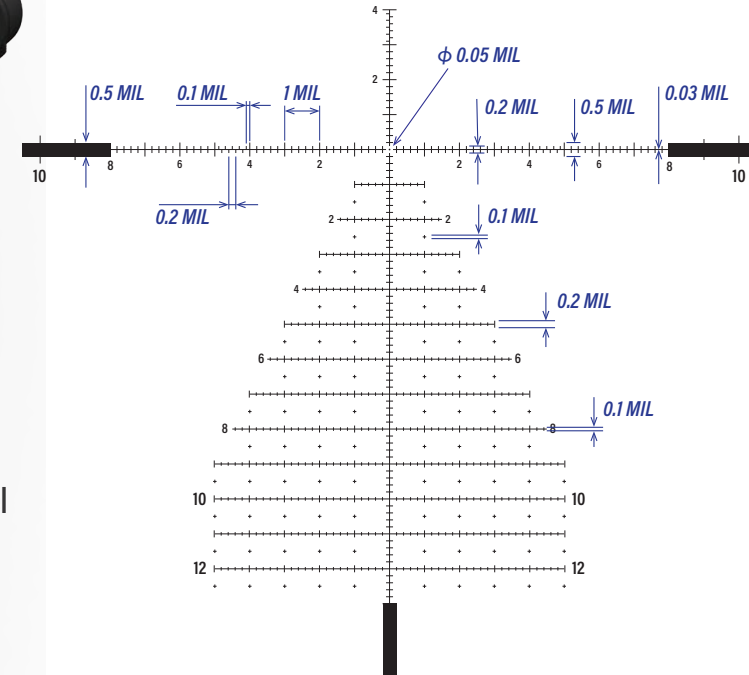
These 2 reticles were designed by PRS shooters who were in need of a PRS oriented reticle with finer lines.



FML-PDK



FML-LDK



D28HV52WFIML

## Non-Illuminated Model